



The Avondale



With its broad frontage, The Avondale has a grand street presence and offers a warm and open-hearted welcome. The living, dining and kitchen spaces seamlessly connect with the alfresco area to offer ample space for the largest of families to live and entertain. Four expansive bedrooms, the master with ensuite and walk-in robe, are private retreats, while the multi-purpose room opens the door on a world of lifestyle possibilities.

Livelle Homes 

The Avondale

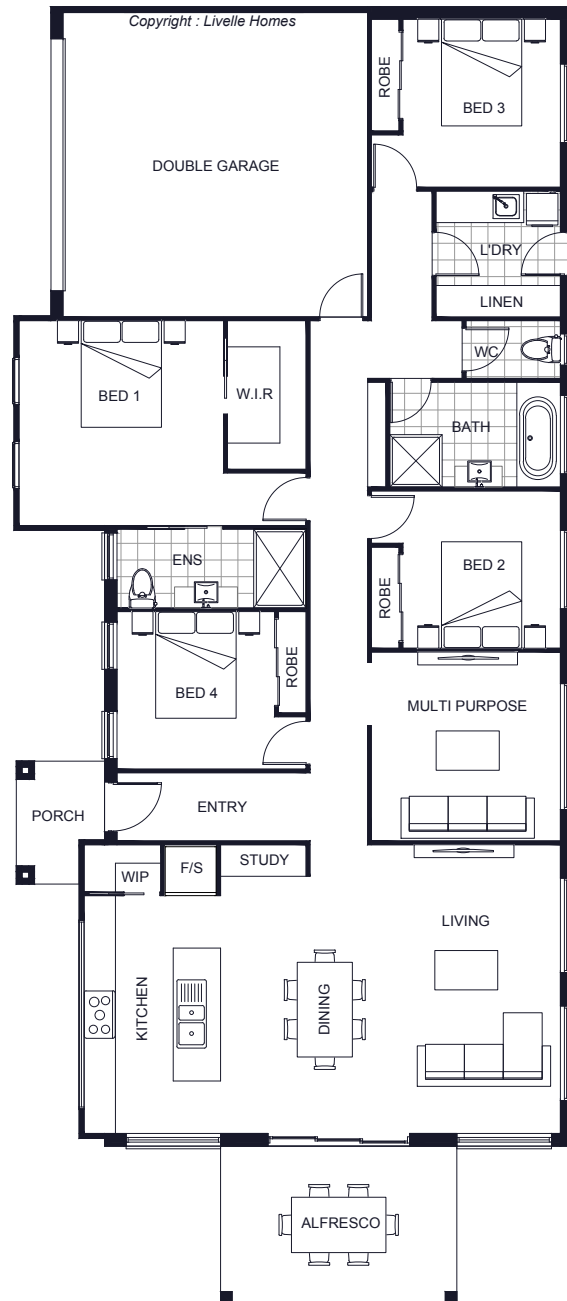


| | | |
|----------|-------|-----|
| Living | 173.7 | Sqm |
| Garage | 35.6 | Sqm |
| Alfresco | 13.5 | Sqm |
| Porch | 3.7 | Sqm |

| | | |
|-------|-------|-----|
| Total | 226.6 | Sqm |
|-------|-------|-----|

| | | |
|--------|-------|---|
| Length | 10.64 | m |
| Width | 24.70 | m |

- Modern style home
- Open plan living & dining
- Entertainer's kitchen & WIP
- Alfresco off main living area
- Master with ensuite & WIR
- Separate multi-purpose room
- Additional study



hello@livellehomes.com.au
 Phone Daniel on 0408 557 125
 livellehomes.com.au

Livelle Homes