



The Thurtell



The Thurtell is a perfect place to call home. This large four-bedroom, two-bathroom home offers the luxury of a multi-purpose room and walk-in linen cupboard. Fall in love with the sprawling kitchen with its beautiful cabinetry and island bench, and its position adjoining the large open plan living and dining space and alfresco area.

Livelle Homes 

The Thurtell

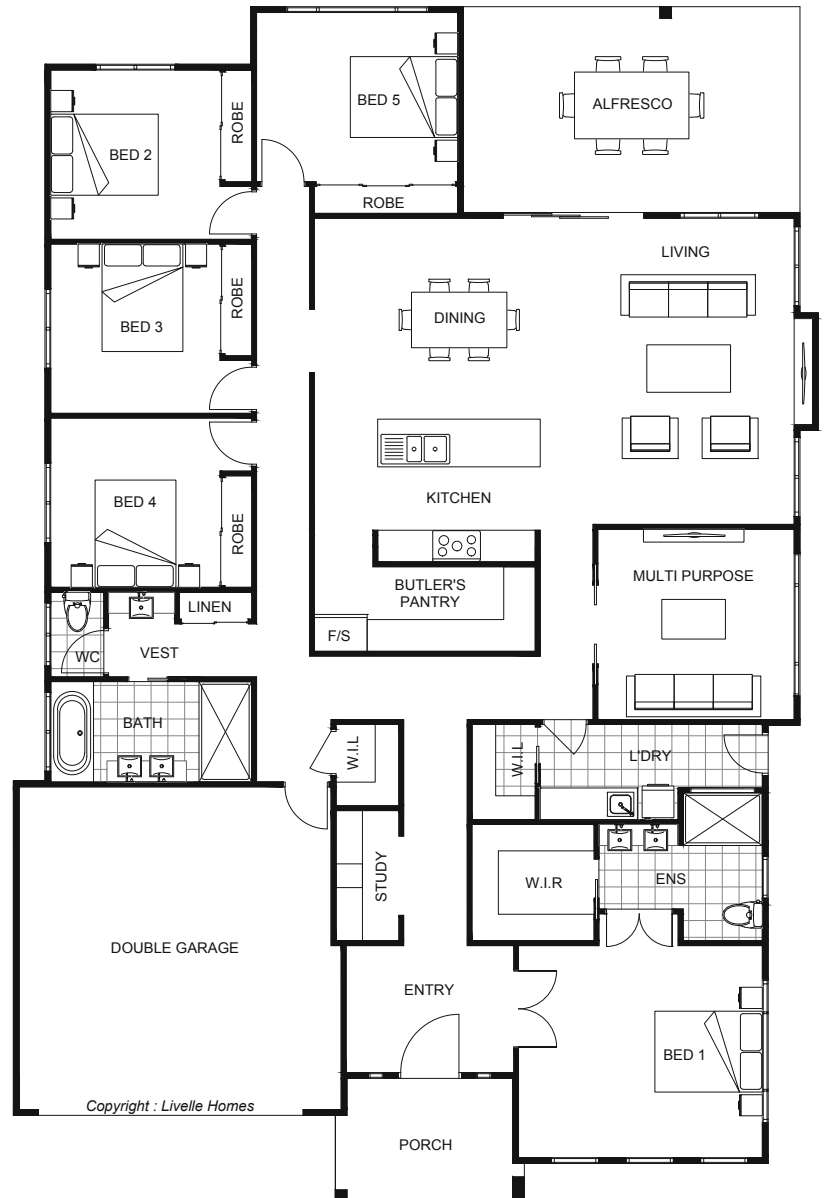


Living	242.5	Sqm
Garage	39.9	Sqm
Alfresco	24.7	Sqm
Porch	7.1	Sqm

Total	314.2	Sqm
-------	-------	-----

Length	22.72	m
Width	15.48	m

- Modern style home
- Open plan living & dining
- Entertainer's kitchen with WIP
- Alfresco off main living areas
- Master with ensuite & WIR
- Separate multi-purpose room
- Additional study



hello@livelleshomes.com.au
 Phone Daniel on 0408 557 125
 livellehomes.com.au

Livelle Homes