



The Pineridge



With its generous frontage, the Pineridge makes a bold statement on the street. A grand entry welcomes you home and offers easy access to a multi-purpose room, which can double as a home office. A large pantry, walk-in robe in the master suite, and study nook add to this home's function.

Livelle Homes 

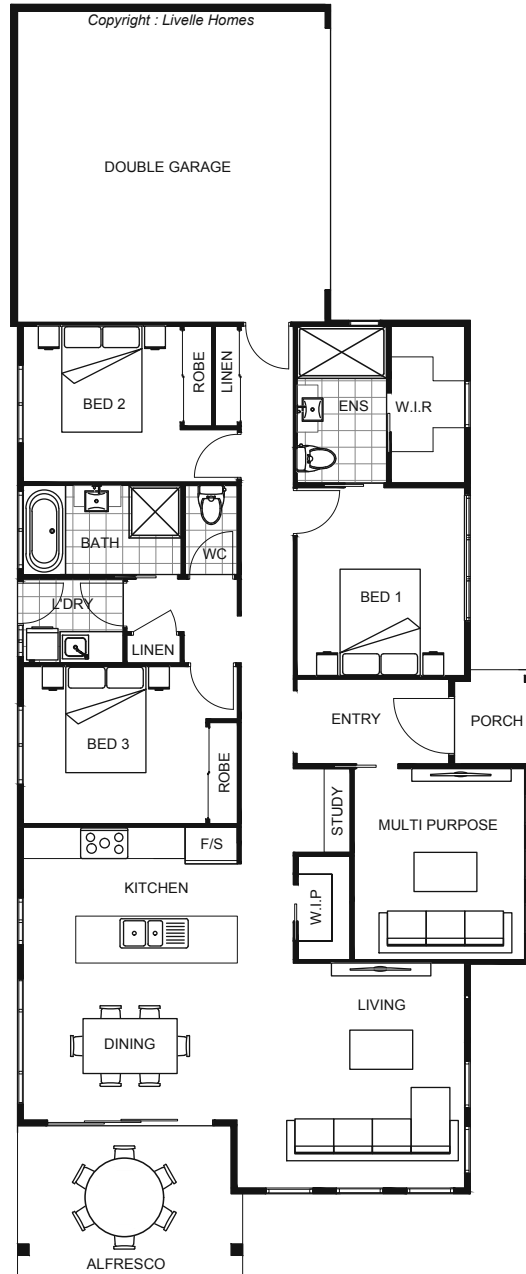
The Pineridge



Living	148.1	Sqm
Garage	37.9	Sqm
Alfresco	12.0	Sqm
Porch	2.5	Sqm
Total	200.5	Sqm

Length	9.91	m
Width	23.92	m

- Modern style home
- Open plan living & dining
- Entertainer's kitchen with WIP
- Alfresco off main living areas
- Master with ensuite & WIR
- Separate multi-purpose room
- Additional study nook



hello@livelleshomes.com.au
 Phone Daniel on 0408 557 125
 livellehomes.com.au

Livelle Homes