



The Oleander



The Oleander is a large family home packed with style and features. A study beside the entry suits those who work from home, while the open plan kitchen, living and dining and its connection to the alfresco area suits those who love to entertain. The design separates the bedrooms from living, adding to the peace and privacy, while the large multi-purpose room suits movie buffs.

Livelle Homes 

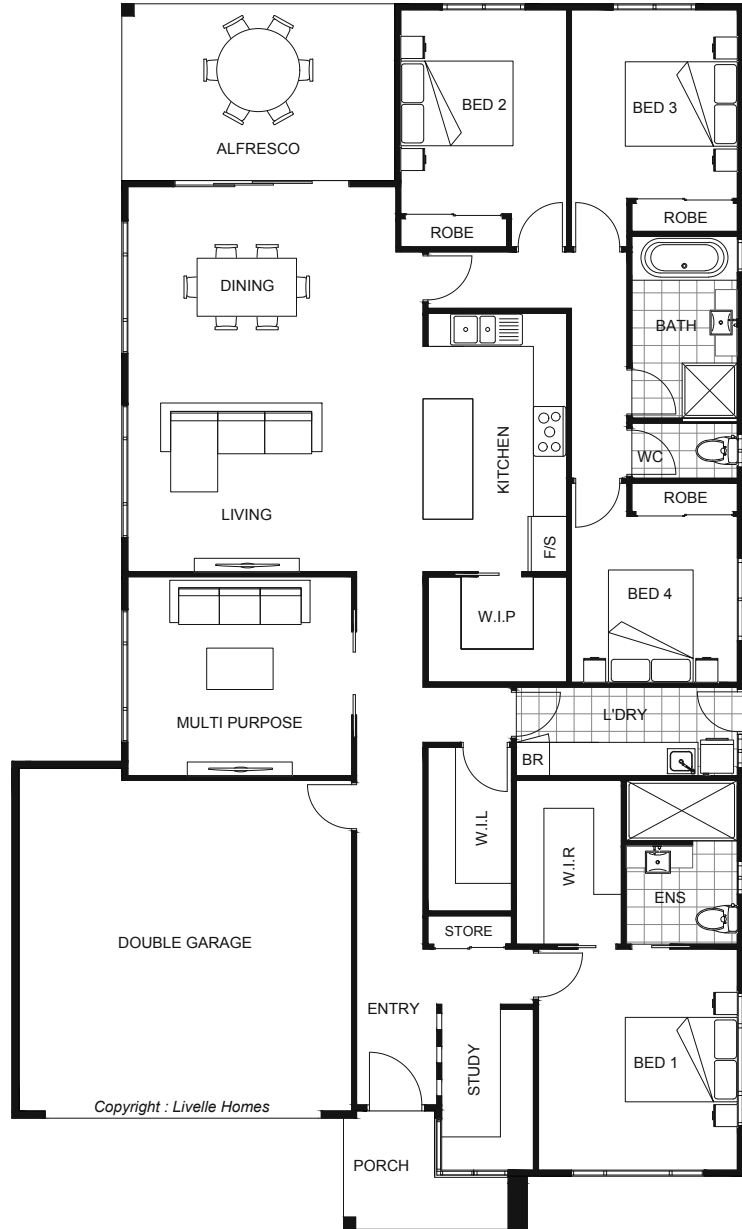
The Oleander



Living	198.8	Sqm
Garage	38.2	Sqm
Alfresco	15.8	Sqm
Porch	3.4	Sqm
Total	256.2	Sqm

Length	22.31	m
Width	13.37	m

- Modern style home
- Open plan living & dining
- Entertainer's kitchen with WIP
- Alfresco off main living areas
- Master with ensuite & WIR
- Separate multi-purpose room



hello@livellehomes.com.au
 Phone Daniel on 0408 557 125
 livellehomes.com.au

Livelle Homes