



The Lysterfield



The Lysterfield is perfect for large families with its distinctly separated living and sleeping zones. Upon entry, the welcoming living zone beckons with open plan kitchen, dining and living connected to a generous alfresco area. When it's time to retreat, the sleeping zone welcomes with its four private bedrooms and two bathrooms.

Livelle Homes 

The Lysterfield

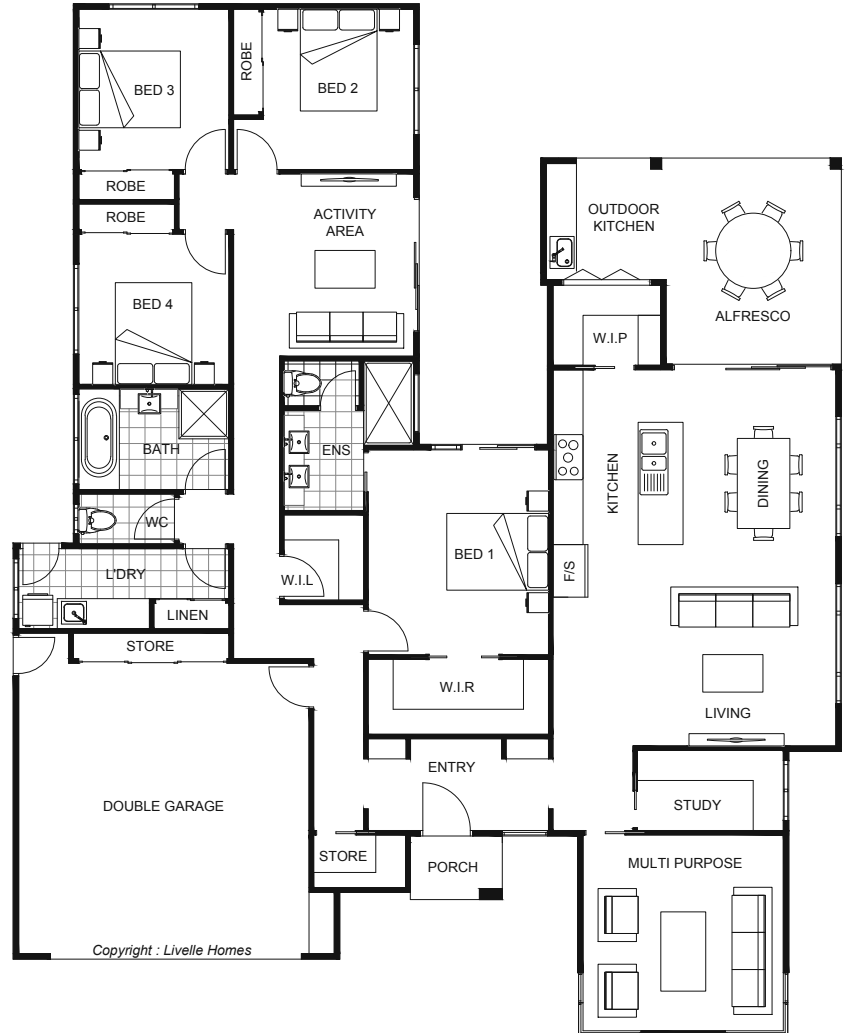


Living	203.5	Sqm
Garage	40.2	Sqm
Alfresco	20.0	Sqm
Porch	2.1	Sqm

Total	265.8	Sqm
-------	-------	-----

Length	20.73	m
Width	16.80	m

- Modern style home
- Open plan living & dining
- Entertainer's kitchen with WIP
- Alfresco off main living areas
- Master with ensuite & WIR
- Separate multi-purpose room
- Additional study & activity area



hello@livellehomes.com.au
 Phone Daniel on 0408 557 125
 livellehomes.com.au

Livelle Homes