



The Larela



The Larela brings space and privacy to the family home. With its defined living zone, and the second and third bedrooms, bathroom and multi-purpose room cleverly separated from the master retreat, this home is particularly suited to a growing or multi-generational family. It's one everyone will love.

Livelle Homes 

The Larela

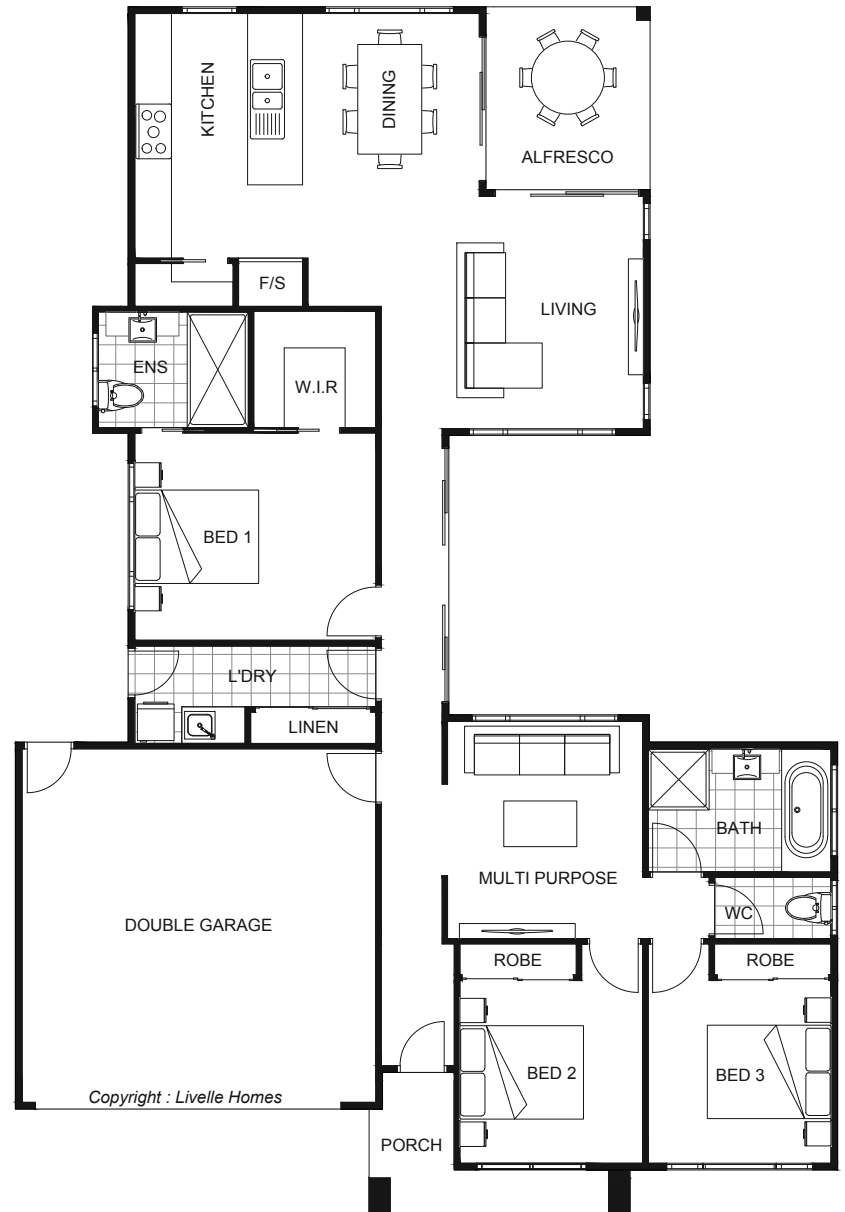


Living	139.6	Sqm
Garage	37.0	Sqm
Alfresco	8.1	Sqm
Porch	5.0	Sqm

Total	189.7	Sqm
--------------	--------------	------------

Length	19.93	m
Width	13.75	m

- Modern style home
- Open plan living & dining
- Entertainer's kitchen
- Alfresco off main living areas
- Master with ensuite & WIR
- Separate multi-purpose room



hello@livellehomes.com.au
 Phone Daniel on 0408 557 125
 livellehomes.com.au

Livelle Homes