



# The Jasmine



The kitchen is the heart of the home, and in the Jasmine, it has been designed to bring the family together with its large island bench. This home's design gives you the choice to dine indoors or out, and the room to relax and settle into the spacious living room. Ample storage throughout the home means you will never have to compromise.

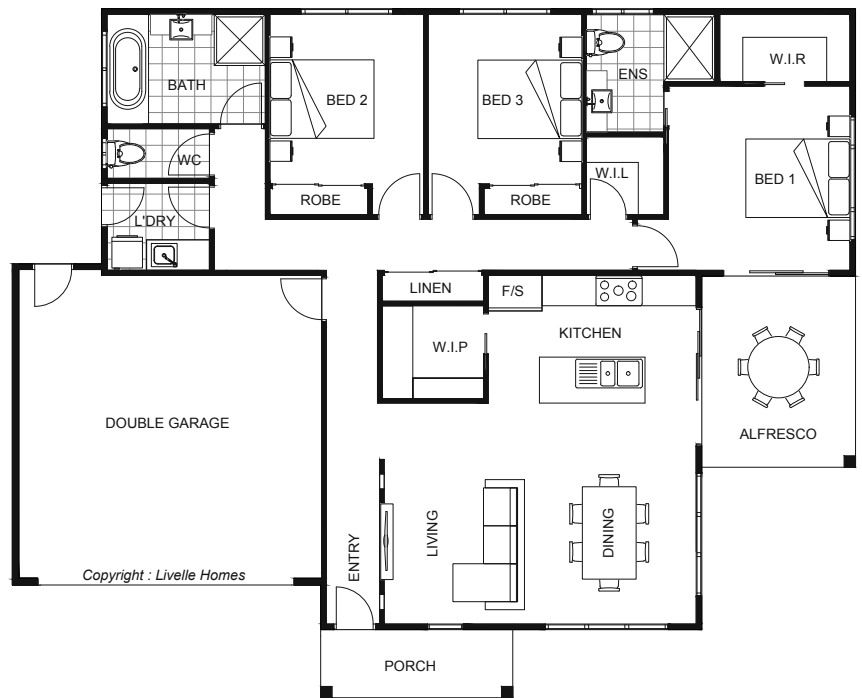
Livelle Homes

# The Jasmine



Living	133.7	Sqm
Garage	37.1	Sqm
Alfresco	10.8	Sqm
Porch	4.6	Sqm
<hr/>		
Total	186.2	Sqm
<hr/>		
Length	13.58	m
Width	16.59	m

- Modern style home
- Open plan living & dining
- Entertainer's kitchen with WIP
- Alfresco off main living areas
- Master with ensuite & WIR
- Walk-in storage



hello@livellehomes.com.au  
 Phone Daniel on 0408 557 125  
 livellehomes.com.au

**Livelle Homes**