



# The Ibis



The Ibis is truly a statement home, with an extensive front porch that welcomes you into a sprawling space that is ideal for both growing and multi-generational families. Its large living space and alfresco area are a dream for enthusiastic entertainers. You never have to worry about storage either, for its many robes and linen cupboards provide ample room.

Livelle Homes 

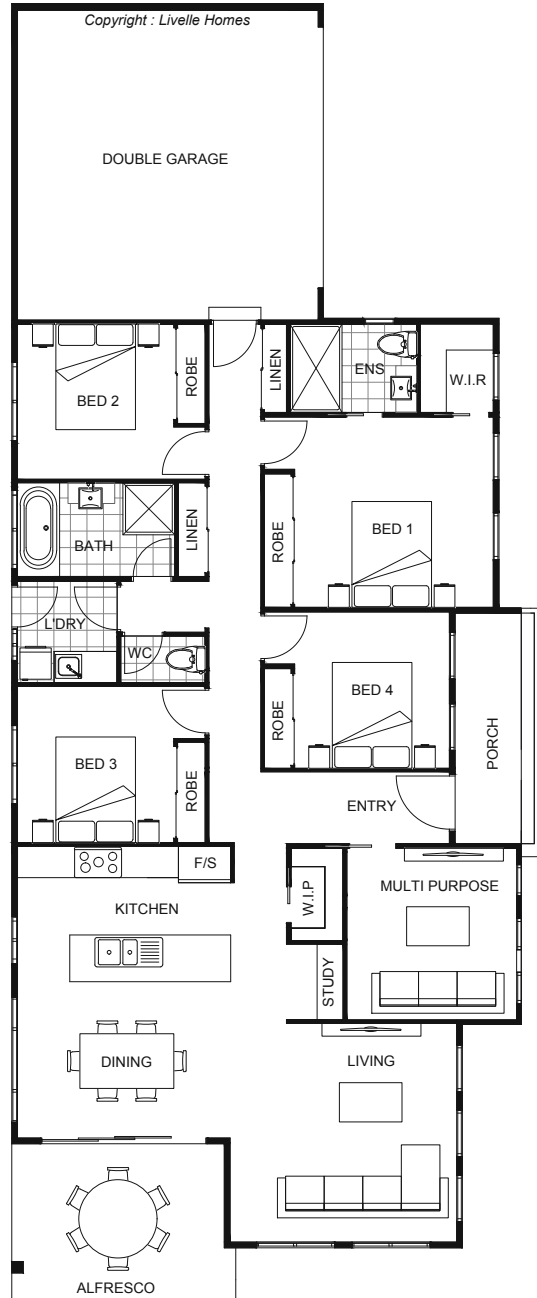
## The Ibis



Living	159.1	Sqm
Garage	37.9	Sqm
Alfresco	12.3	Sqm
Porch	5.1	Sqm
<b>Total</b>	<b>214.4</b>	<b>Sqm</b>

Length	9.91	m
Width	24.50	m

- Modern style home
- Open plan living & dining
- Entertainer's kitchen with WIP
- Alfresco off main living areas
- Master with ensuite & WIR
- Separate multi-purpose room
- Additional study nook



hello@livellehomes.com.au  
 Phone Daniel on 0408 557 125  
 livellehomes.com.au

Livelle Homes