



# The Holman



An entertainer's delight, the Holman offers connected living and dining, and an expansive alfresco space. The designer kitchen with island bench and walk-in pantry is crafted to inspire culinary delights. While the family bedrooms are generously sized and the master suite, with walk-in robe and ensuite, is a private retreat.

Livelle Homes 

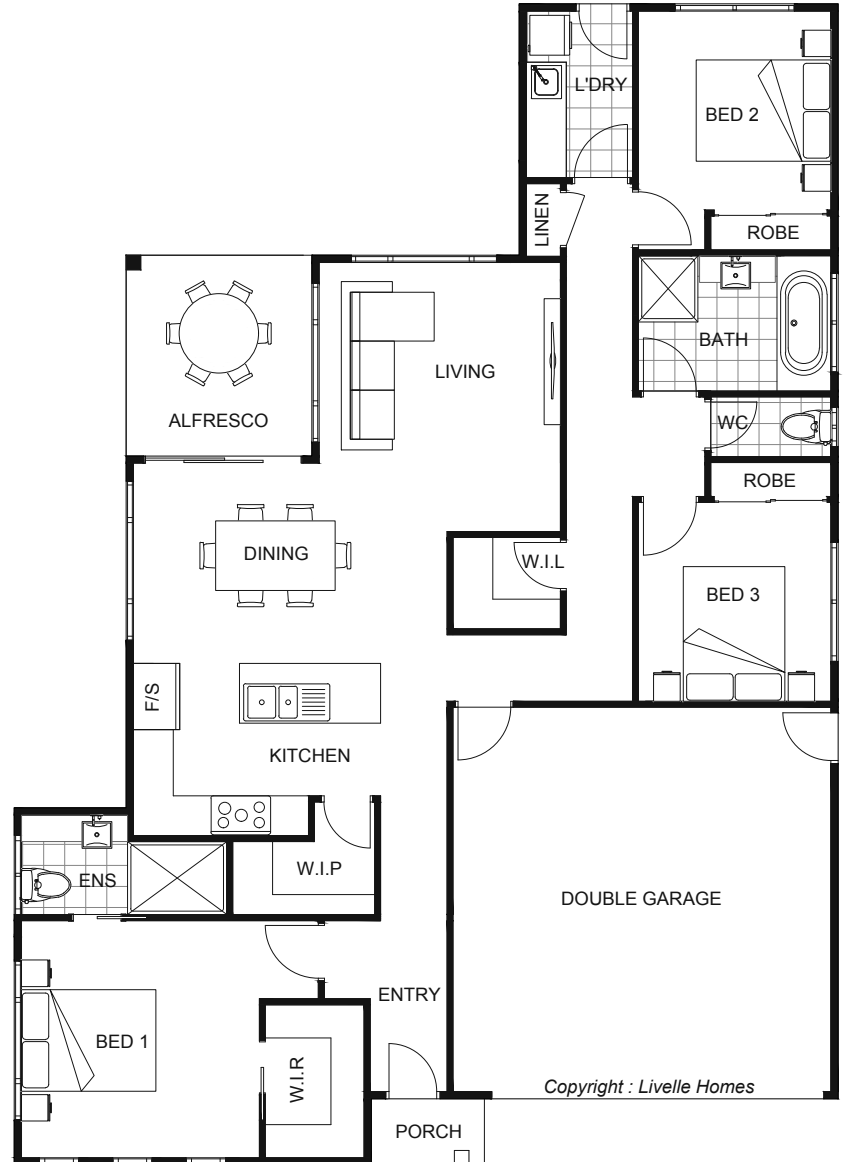
# The Holman



Living	131.3	Sqm
Garage	35.8	Sqm
Alfresco	8.5	Sqm
Porch	1.3	Sqm
<b>Total</b>	<b>176.9</b>	<b>Sqm</b>

Length	17.78	m
Width	12.69	m

- Modern style home
- Open plan living & dining
- Entertainer's kitchen with WIP
- Alfresco off main living areas
- Master with ensuite & WIR
- Additional WIL



Copyright : Livelle Homes

hello@livellehomes.com.au  
 Phone Daniel on 0408 557 125  
 livellehomes.com.au

Livelle Homes