



The Ellenbrae



The Ellenbrae is perfect for those looking for all the luxuries of a larger house in a smaller, more manageable space. It has three large bedrooms, including a master suite with an expansive walk-in robe and ensuite. An entertainer's kitchen with a walk-in pantry leads into a vast open plan living and dining room. A walk-in linen closet also provides you with plenty of room for storage.

Livelle Homes 

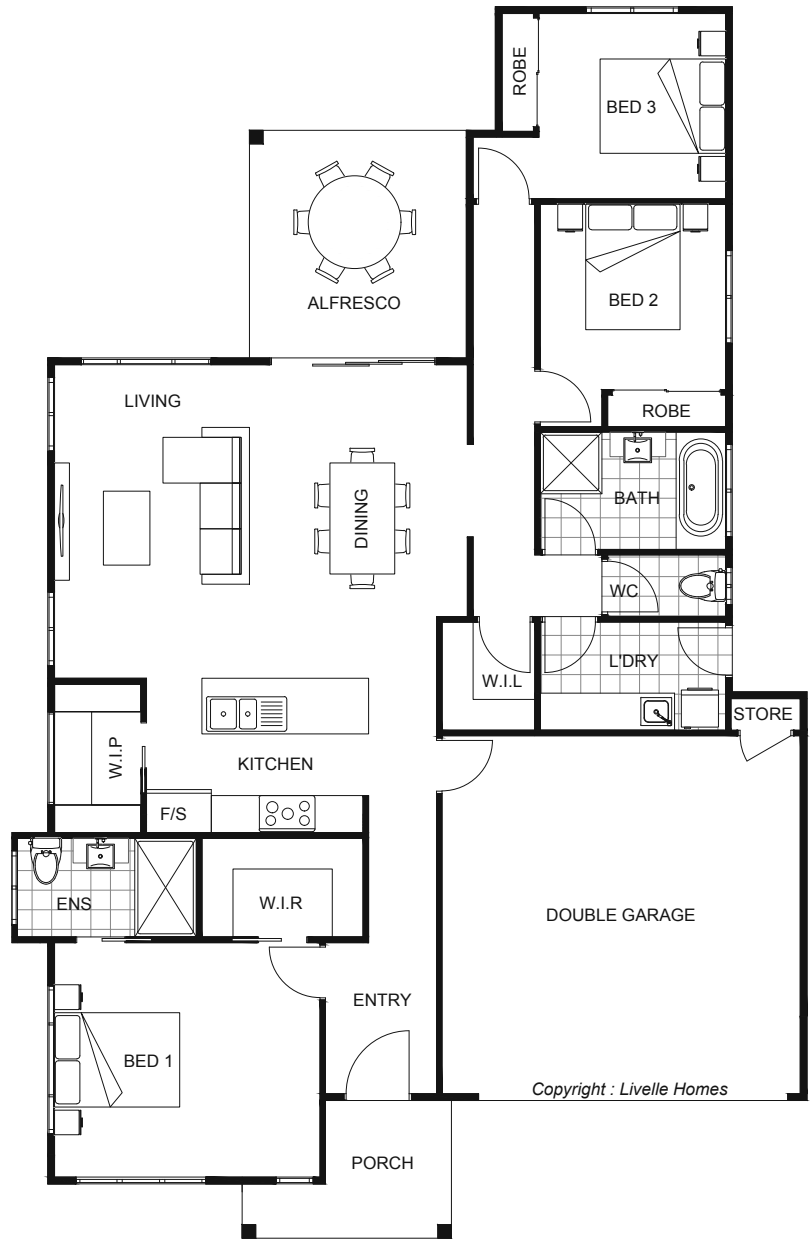
The Ellenbrae



Living	142.1	Sqm
Garage	37.6	Sqm
Alfresco	12.5	Sqm
Porch	5.5	Sqm
Total	197.7	Sqm

Length	20.08	m
Width	13.01	m

- Modern style home
- Open plan living & dining
- Entertainer's kitchen with WIP
- Alfresco off main living areas
- Master with ensuite & WIR



hello@livellehomes.com.au
 Phone Daniel on 0408 557 125
 livellehomes.com.au

