



The Centennial



Stand out from the crowd with the Centennial. Flowing open plan living and generous spaces to entertain are a feature. So is privacy in the bedrooms and luxuries that help you to unwind. This home doesn't ask for compromise. Instead, it delivers the life you've always dreamed of living.

Livelle Homes 

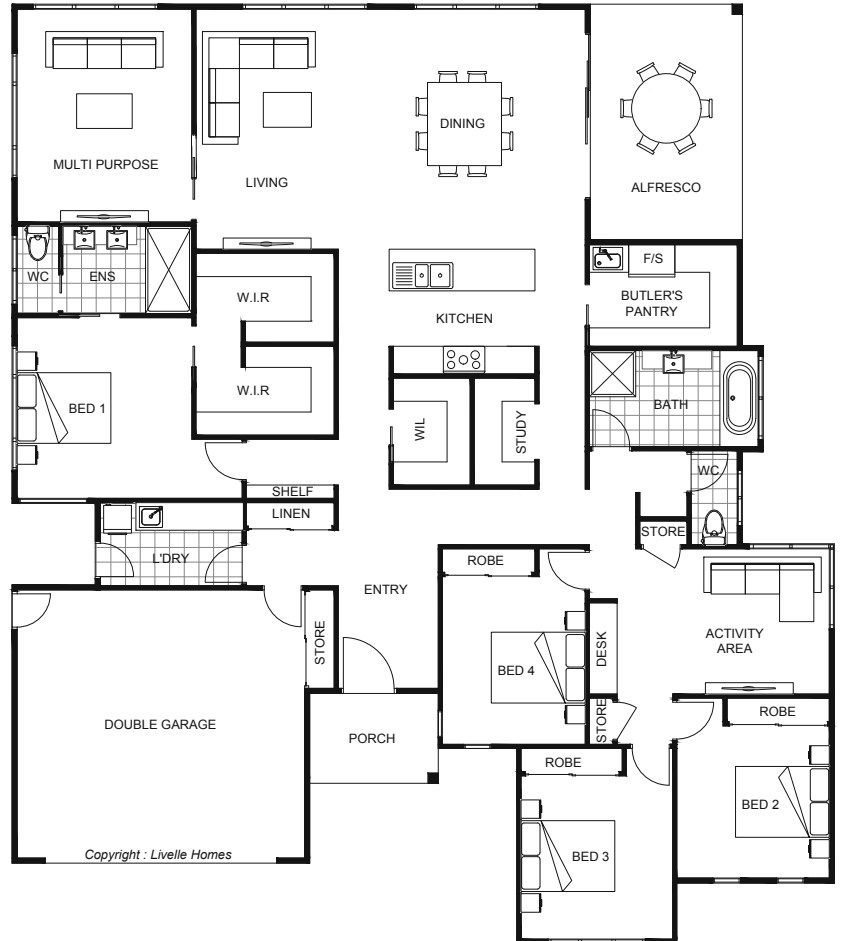
The Centennial



| | | |
|--------------|--------------|------------|
| Living | 251.1 | Sqm |
| Garage | 40.3 | Sqm |
| Alfresco | 16.8 | Sqm |
| Porch | 4.8 | Sqm |
| Total | 313.0 | Sqm |

| | | |
|--------|-------|---|
| Length | 21.49 | m |
| Width | 18.95 | m |

- Modern style home
- Open plan living & dining
- Butler's pantry
- Alfresco off main living areas
- Master with ensuite & W.I.R
- Separate multi-purpose room
- Additional study & activity area



hello@livellehomes.com.au
 Phone Daniel on 0408 557 125
 livellehomes.com.au

