



# The Camellia



This home provides multiple living zones and ensures plenty of space for everyone. Dine or relax outdoors in the alfresco area, unwind with friends in the expansive multi-purpose room, and entertain larger crowds in the combined kitchen, living and dining space. With the bedrooms set apart from the living zones, the Camellia makes it possible to retreat and relax.

Livelle Homes

## The Camellia

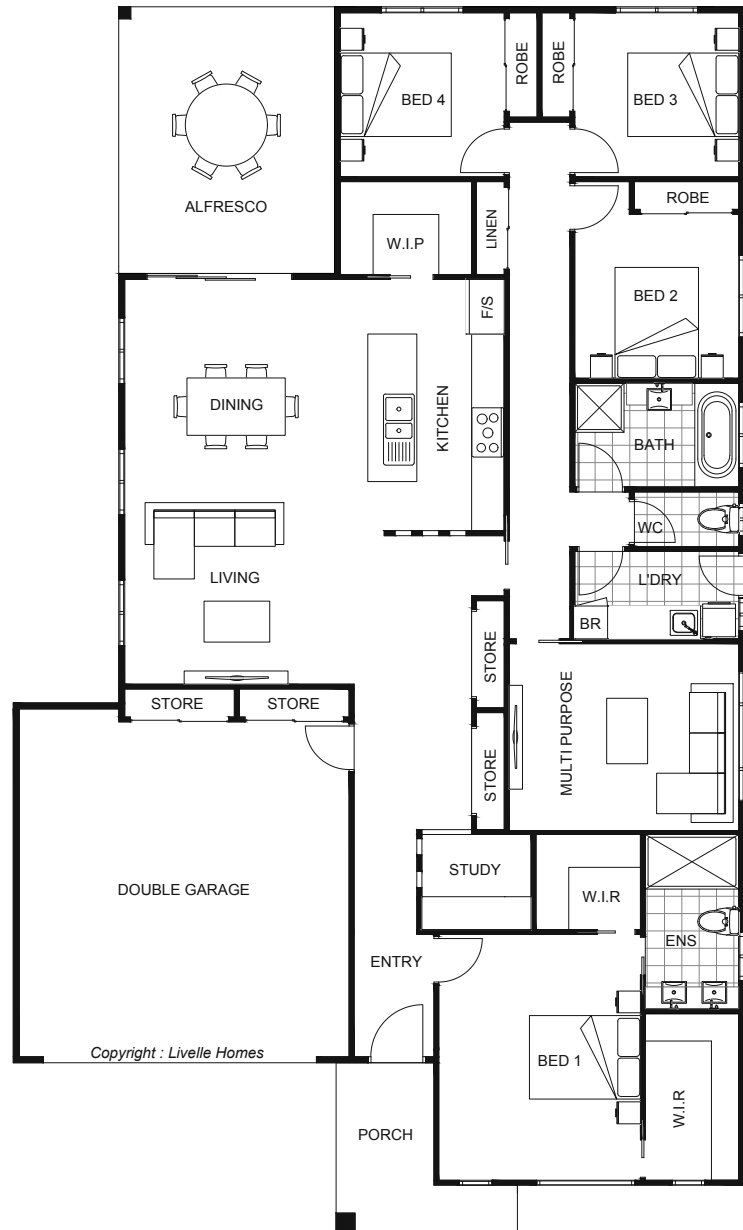


Living	192.7	Sqm
Garage	41.6	Sqm
Alfresco	19.3	Sqm
Porch	7.1	Sqm

Total	260.7	Sqm
-------	-------	-----

Length	22.56	m
Width	13.52	m

- Modern style home
- Open plan living & dining
- Entertainer's kitchen with WIP
- Alfresco off main living areas
- Master with ensuite & WIR
- Separate multi-purpose room



hello@livellehomes.com.au  
 Phone Daniel on 0408 557 125  
 livellehomes.com.au

Livelle Homes