



The Bluebell



The Bluebell combines space and privacy to provide a modern home that suits both growing and multi-generational families. This home allows you to spend hours with your loved ones in the open plan and alfresco living spaces. It also lets you get some peace and quiet in one of its four expansive bedrooms, including the master suite, with a walk-in robe and ensuite.

Livelle Homes 

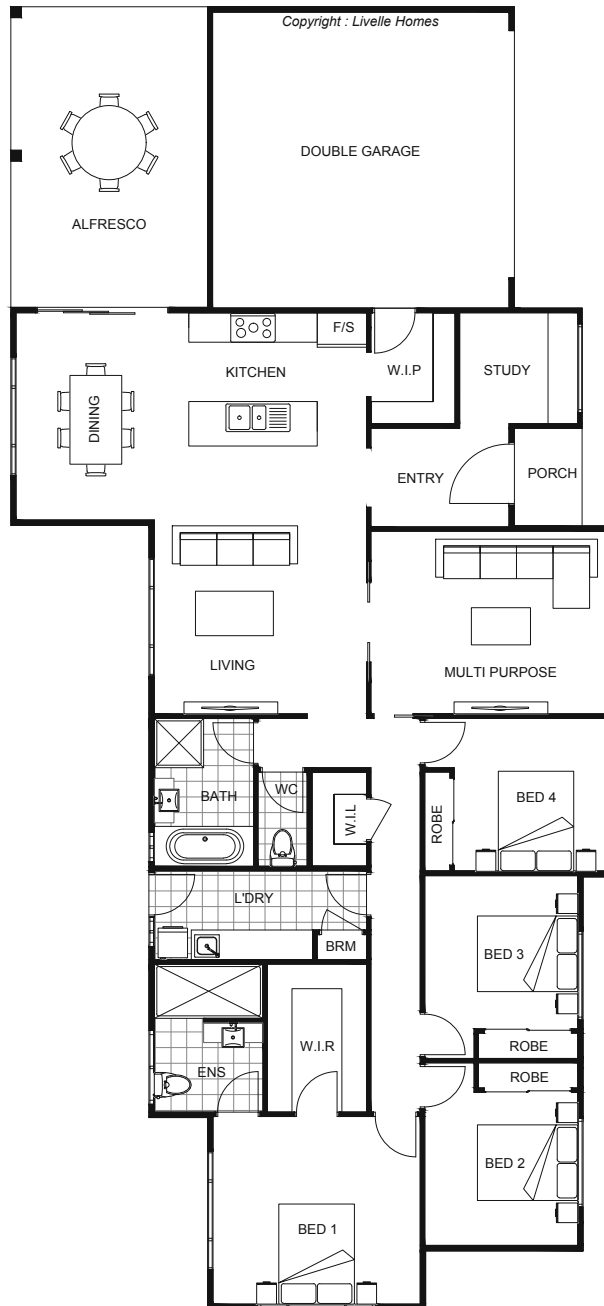
The Bluebell



Living	190.8	Sqm
Garage	40.4	Sqm
Alfresco	24.3	Sqm
Porch	2.2	Sqm
Total	257.8	Sqm

Length	14.46	m
Width	26.66	m

- Modern style home
- Open plan living & dining
- Entertainer's kitchen with WIP
- Alfresco off main living areas
- Master with ensuite & WIR
- Separate multi-purpose room
- Additional study



hello@livellehomes.com.au
 Phone Daniel on 0408 557 125
 livellehomes.com.au

Livelle Homes