



The Ashley



The striking raked roof on the Ashley will catch your eye, while the home's functional design will capture your heart. The master bedroom holds pride of place at the front, the kitchen, dining, and living, including an alfresco area and multi-purpose room, hold strong in the centre of the home, and the three remaining family bedrooms offer a retreat at the rear.

Livelle Homes 

The Ashley

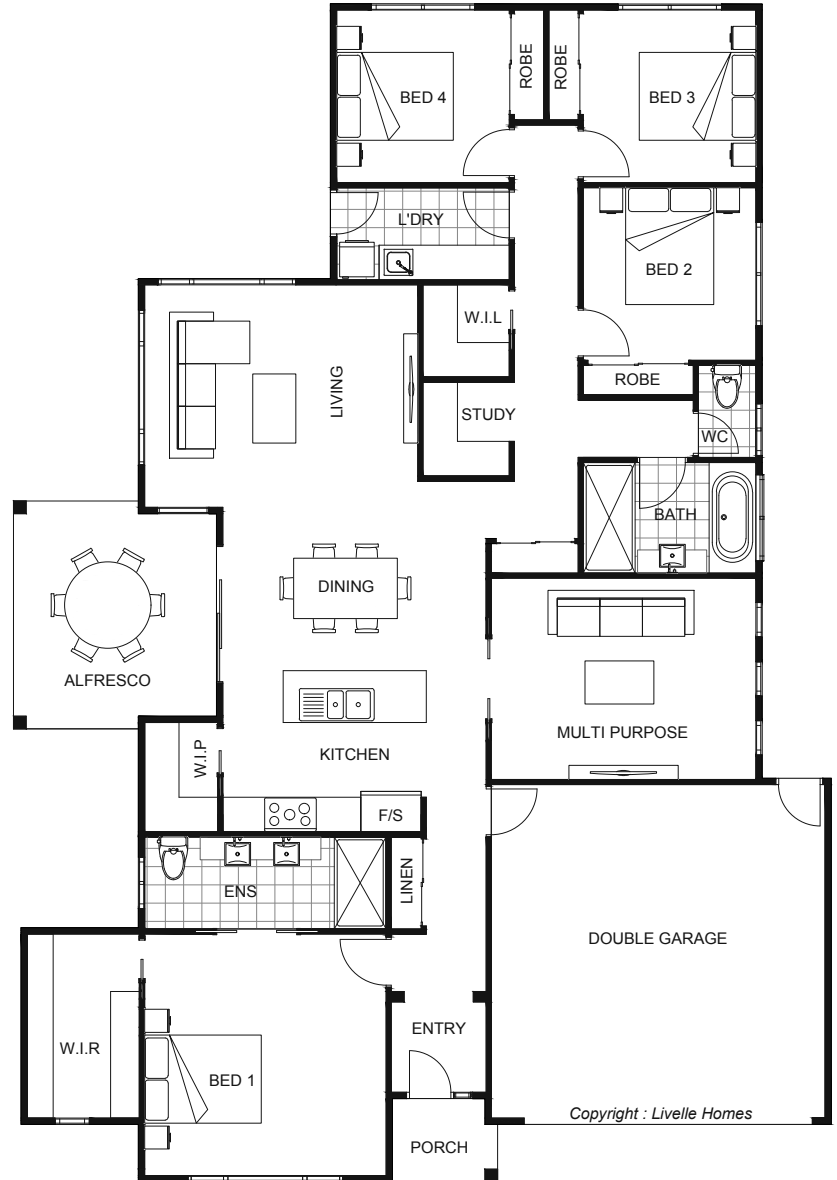


Living	181.3	Sqm
Garage	36.9	Sqm
Alfresco	12.5	Sqm
Porch	2.3	Sqm

Total	233.0	Sqm
-------	-------	-----

Length	20.75	m
Width	14.35	m

- Contemporary style home
- Open plan living & dining
- Entertainer's kitchen with WIP
- Alfresco off main living areas
- Master with ensuite & WIR
- Separate multi-purpose room
- Study nook & WIL



Copyright : Livelle Homes

hello@livellehomes.com.au
 Phone Daniel on 0408 557 125
 livellehomes.com.au

Livelle Homes