



The Fahy



The Fahy is an impressive family home of generous proportions. With its distinct parents' wing – featuring bedroom, ensuite, dual walk-in robes, living and study – masterfully separated from the family bedrooms by expansive designer living, it offers peace and privacy. It also offers space for large family gatherings, with seamlessly connected kitchen, dining, living and alfresco areas. The alfresco area comes complete with outdoor kitchen, while the spacious double garage offers sizable storage.

Livelle Homes

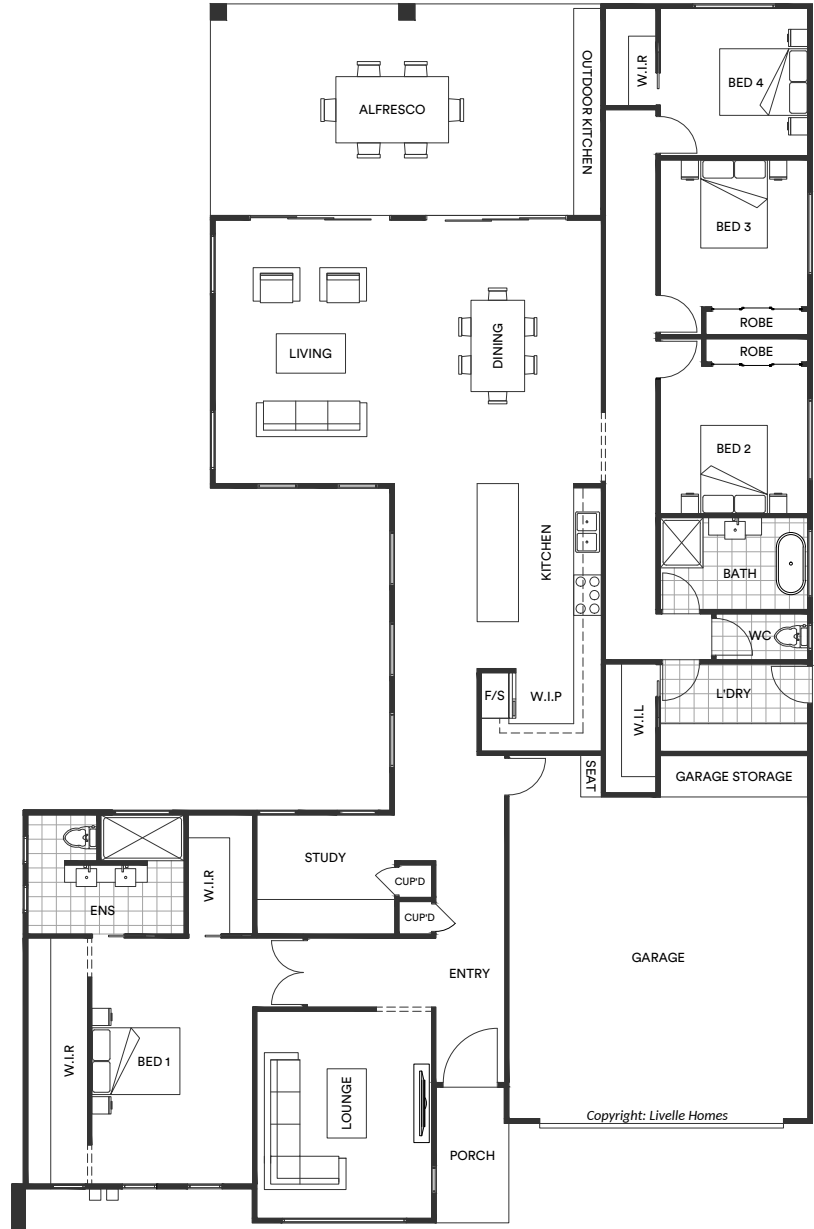
The Fahy



Living	251.8	Sqm
Garage	52.3	Sqm
Alfresco	39.8	Sqm
Porch	4.6	Sqm
Total	348.7	Sqm

Length	26.79	m
Width	17.56	m

- Contemporary style home
- Open plan living & dining
- Entertainer's kitchen
- Alfresco off main living areas
- Master with ensuite & WIR
- Separate multi-purpose room
- Additional study



hello@livelleshomes.com.au
 Phone Daniel on 0408 557 125
 livellehomes.com.au

Livelle Homes